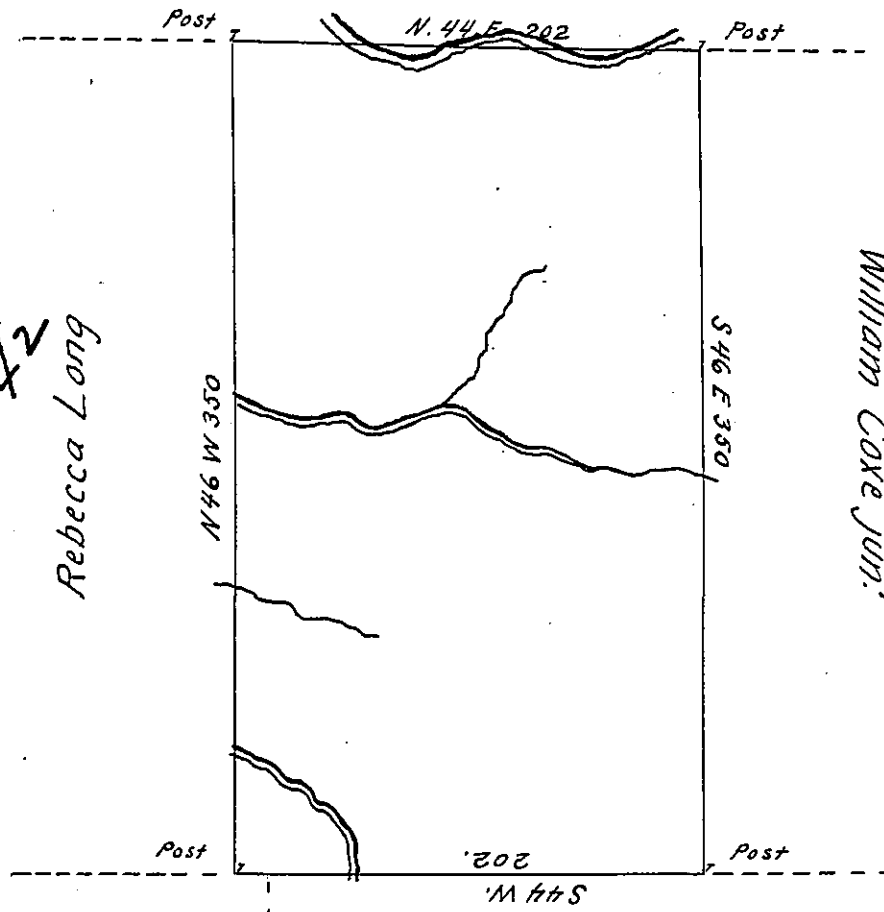


C-35-230



C-116-42
Rebecca Long

William Coxe Jun.
C-35-232

Abraham Kintzing J.
882-16-7

Pearson Hunt
981-57-7

By Virtue of a Warrant dated the 20th June 1788 Surveyed the 25th June 1788
 to Mary Coxe the above described tract of land Situate on one of the head branches
 of Lehi in the County of Northampton. Containing four hundred and Sixteen Acres
 138 perches & the Allowance of Six p. Cent &c^e

To John Lukens Esq^r }
 Survey^r General. }

pr. Geo. Palmer

IN TESTIMONY that the above is a copy of the original remaining on file in
 the Department of Internal Affairs of Pennsylvania, made
 conformably to an Act of Assembly approved the 16th day of
 February, 1833, I have hereunto set my Hand and caused
 the Seal of said Department to be affixed at Harrisburg,
 this eleventh day of May 1904.

Geo. D. Brown
 Secretary of Internal Affairs.